



# Junior Planning Conference

*Included in your packet...*

PAGE	HANDOUT
1	Four Reasons to Choose a Community College
2	IVC Freshman Advantage Flyer
3-4	CSU Campus Highlights
5-6	UC Personal Insight Question Prompts
7	Common App Essay Prompts
8	SAT/ACT Testing Dates
9	“A” options for “B” students handout
10-11	Western Undergraduate Exchange (WUE)
12-13	Junior and Senior Year Checklist
14-15	ROP Courses and Schedule
16-19	Senior Survey

## QUESTIONS? CONTACT YOUR COUNSELOR:

Mr. Schoch (A-Dj)

[nateschoch@iusd.org](mailto:nateschoch@iusd.org)

Ms. Addressi (Do-Kh)

[hannaaddressi@iusd.org](mailto:hannaaddressi@iusd.org)

Ms. Nguyen (Ki-Mem)

[nancynguyen@iusd.org](mailto:nancynguyen@iusd.org)

Mrs. Strausheim (Men-Sha)

[angeliquestrausheim@iusd.org](mailto:angeliquestrausheim@iusd.org)

Mrs. Adams (She-Z)

[jamiadams@iusd.org](mailto:jamiadams@iusd.org)

## 4 Great Reasons to Choose Community College

### Cost

Community College Tuition*	California State University Tuition*	University of California Tuition*
\$1,104 per year	\$5,742 per year	\$13,900 per year

\*Approximate cost does not include room and board or books and supplies

### Transfer-Ability

- University of California-**

Transfer Admission Guarantee (TAG) Program:

6 UC campuses (see chart below) offer guaranteed admission to California community college students who meet the GPA and other guidelines specific to that campus, by participating in a TAG program.

Average GPA of Students Admitted to UC System (Non-Selective Majors)				
	High School	Community College	TAG Program?	TAG GPA
UC Berkeley	4.22	3.77		N/A
UC Davis	4.10	3.48	✓	3.2-3.3
UC Irvine	4.07	3.51	✓	3.4
UC Los Angeles	4.21	3.71		N/A
UC Merced	3.67	3.24	✓	2.8-3.0
UC Riverside	3.80	3.25	✓	3.0-3.2
UC San Diego	4.15	3.64		N/A
UC Santa Barbara	4.08	3.54	✓	3.4
UC Santa Cruz	3.90	3.35	✓	3.0

- California State University Upper-Division Transfer Requirements**

You will need at least 60 semester or 90 quarter transferable units completed by the time you enter a CSU. To make admission decisions, CSU admissions offices look at 3 factors:

- Your college grades
- The college coursework you have completed, especially in general education
- Whether you are in good standing at the last college or university you attended

### Discover a Career Path/College Major

- Community college is a great and inexpensive way to investigate your interests.
- Community colleges specialize in 2-year programs that prepare students for a career. Examples include:
  - Aviation Pilot Training
  - Electrocardiograph Technician
  - Culinary Arts
  - Interior Design
  - Licensed Vocational Nurse (LVN)
  - Fire Science

### Student-Centered Teaching

- Professors at community colleges emphasize **teaching**, not research or publishing
- Smaller classes

<https://www.calstate.edu/sas/costofattendance/>

<http://admission.universityofcalifornia.edu/paying-for-uc/tuition-and-cost/index.html>

<http://admission.universityofcalifornia.edu/transfer/guarantee/>

[http://www.orangecoastcollege.edu/prospective\\_student/high-school-students/Pages/Average-GPA-to-Transfer.aspx](http://www.orangecoastcollege.edu/prospective_student/high-school-students/Pages/Average-GPA-to-Transfer.aspx)



# Freshman Advantage Program



**APPLY EARLY. REGISTER EARLY.**

[admissions.ivc.edu/advantage](https://admissions.ivc.edu/advantage)

See reverse ➤



## Freshman Advantage Program

For high school seniors attending Irvine Valley College in the Fall 2020 semester. Complete the below steps by the deadline to receive an early registration date and enroll in classes early.

### HOW TO BECOME AN IVC STUDENT:

- ☐ STEP 1 ...Apply to IVC by Visiting [ivc.edu](https://ivc.edu)
- ☐ STEP 2 ...Complete Your Math and English/ESL Placement
- ☐ STEP 3 ...Submit Your High School Transcripts\*
- ☐ STEP 4 ...Understand Your Options Through Advisement
- ☐ STEP 5 ...Create Your First Semester Plan
- ☐ STEP 6 ...Learn about IVC by Completing Orientation
- ☐ STEP 7 ...Complete Your FAFSA or CA Dream Act Application
- ☐ STEP 8 ...Register for Classes!

\*A high school transcript is highly encouraged for proper placement. Students who completed high school 10 or more years ago can complete the math and English surveys for placement into transfer level math and English courses.

**DEADLINE:**  
**APRIL 17, 2020**

**GET STARTED TODAY:**  
**[ADMISSIONS.IVC.EDU/ADVANTAGE](https://admissions.ivc.edu/advantage)**  
**949-451-5220**

See reverse ➤

# **The California State University (CSU)**

## **Campus Highlights**

### **1. CAL STATE BAKERSFIELD**

- School of Business and Public Administration is accredited by AACSB and NASPAA placing in the top 20% of American business schools
- CSU Bakersfield's nursing program is an integral part of the National Children's Health Study, the largest long-term study of environmental and genetic effects on child health ever undertaken in the United States.

### **2. CSU CHANNEL ISLANDS**

- Small, personal business administration program offers opportunities for business students to assist local entrepreneurs while gaining valuable work experience
- Close-knit atmosphere where students receive individual attention from caring and dedicated faculty

### **3. CSU CHICO**

- One of the highest ranked public comprehensive universities in the West with excellent job placement & graduation rates
- Many of CSU Chico's programs, such as teacher education and nursing, are known for their innovation and outreach to the university's 12-county service area and beyond

### **4. CSU DOMINGUEZ HILLS**

- Known for excellence in teacher education, nursing, psychology, business administration and digital media arts
- Other degree programs include computer science, criminal justice, recreation and leisure studies, social work and communication disorders

### **5. CAL STATE EAST BAY**

- Named a "Best in the West" college as well as a "Best Business School" by *The Princeton Review*, the university also has received national attention for its innovative freshman year experience and learning communities

### **6. FRESNO STATE**

- Nationally acclaimed viticulture and enology program operates Fresno State Winery to produce, bottle and sell wine
- Smittcamp Family Honors College admits 50 top high school graduates with full scholarships annually

### **7. CAL STATE FULLERTON**

- Nation's third largest accredited business program, and drama, musical theater and dance programs are rated nationally
- The Mihaylo College of Business and Economics has the only undergraduate program in California that offers a concentration focused on the business/management side of entertainment and tourism
- *Notable majors: Advertising, Entertainment Studies, Music with Jazz and Commercial Music Concentration*

### **8. HUMBOLDT STATE**

- Opportunities for undergraduate fieldwork in both natural and social sciences
- Home to one of the strongest natural resource and environmental studies departments in the county

### **9. CAL STATE LONG BEACH**

- According to a National Science Foundation (NSF) study, CSU Long Beach produces more baccalaureate graduates who go on to earn a Ph.D. in the sciences and engineering than any other master's university in the United States.
- *Notable majors: Kinesiology with Sport Psychology and Coaching option, Theater Arts, Child Development*

### **10. CAL STATE LOS ANGELES**

- Widely recognized programs that foster leaders in science, business, engineering, healthcare, education & the humanities
- Leading edge technology combines with hands-on research opportunities

### **11. CAL MARITIME**

- One of seven degree-granting maritime academies in the US and only one on West Coast
- Offers accredited programs in business administration, marine transportation, facilities engineering technology, global studies and maritime affairs, marine engineering technology, and maritime trade and transportation
- Graduates are prepared for positions of responsibility in such areas as maritime trade and transportation, business logistics, intermodal transportation, engineering, and maritime security

### **12. CSU MONTEREY BAY**

- Earned national recognition for its work in helping students examine issues of justice, diversity and social responsibility through service learning
- One of the few truly residential campuses in CSU system

### **13. CAL STATE NORTHRIDGE**

- Offers 64 bachelor's and 50 master's degrees including teacher preparation and undergraduate engineering programs ranked among nation's best
  - University hosts an on-campus "learning laboratory" high school, a unique aquatic therapy center and exceptional programs in the performing arts, sciences and ethnic studies
- Notable majors: Journalism, Deaf Studies, Business Administration with Real Estate Option*

### **14. CAL POLY POMONA**

- Recognized for outstanding academic programs that stress a "learn-by-doing" philosophy, including nationally ranked hospitality management, architecture and engineering programs
- Ranks among top five public universities in the West
- Notable Majors: Animal Science – Pre-veterinary, Landscape Architecture, Hotel and Management

### **15. SACRAMENTO STATE**

- Offers life-changing opportunities for students, preparing them to be leaders in their fields and communities
- Students benefit from strong academic programs as well as unique opportunities to study public policy and pursue careers in public service in California's capital city
- Extensive cooperative education, internship and service learning programs available

### **16. CAL STATE SAN BERNARDINO**

- Named by students CSU's most beautiful campus
- Nationally accredited College of Business and Public Administration offers an M.B.A. tailored for executives
- Nationally acclaimed writing program and respected programs in English, computer science, geographic information and decision sciences, psychology, public health administration, and accounting and finance

### **17. SAN DIEGO STATE**

- SDSU ranks among the top 25 public research universities in the nation
  - SDSU ranks No. 2 among universities of its type nationwide and No. 1 in California for students studying abroad as part of their college experience
  - International business program ranks no. 11 in the nation
- Notable majors: International Business, International Security and Conflict Resolution, Criminal Justice*

### **18. SAN FRANCISCO STATE**

- Nationally recognized for its commitment to civic engagement, community service learning and cultural diversity
- Nationally acclaimed programs in such fields as creative writing, cinema, biology, history, broadcast and electronic communication arts, theater arts and ethnic studies

### **19. SAN JOSE STATE**

- Number one supplier of engineering, education, computer science and business graduates to the area
- Ranked among top 10 public colleges and universities in the West that offers full range of bachelor's and master's degrees

### **20. CAL POLY SAN LUIS OBISPO**

- Continually recognized by US News & World Report as one of nation's finest primarily undergraduate public institutions
  - "Learn-by-doing" educational approach has prepared leaders in their fields including engineering, agriculture, architecture, business, the sciences, education, the arts and more
- Notable Majors: Architectural Engineering, Child Development, Software Engineering, Food Science*

### **21. CAL STATE SAN MARCOS**

- Consists of Colleges of Arts and Sciences, Business Administration, and Education and newly established School of Nursing at the Palomar Pomerado Health Education Center

### **22. SONOMA STATE**

- Relatively small campus of 8000 students in beautiful wine country
  - Provides ethical exploration, civic engagement, social responsibility and global awareness combined with a foundation in an academic discipline
- Notable majors: American Cultural Studies, Human Development, Global Studies with concentration in Asian Studies*

### **23. CAL STATE STANISLAUS**

- Partnership programs in nursing, business and agriculture help meet regional workforce needs
- Endangered Species Recovery Program teams university faculty and staff with state and federal agency experts to preserve and restore plant and animal life in the region
- The Human Resource Management program has the nation's top student testing success rate.

# PERSONAL INSIGHT QUESTIONS: GUIDE FOR FRESHMAN APPLICANTS

UNIVERSITY  
OF  
CALIFORNIA

---

## Getting started

This worksheet is designed to help freshman applicants start the writing process for the personal insight questions in the undergraduate admissions application. Additional hints and suggestions can be found on UC's admissions website at [ucal.us/personalquestions](https://ucal.us/personalquestions).

---

### What are the personal insight questions?

These questions are about getting to know you better — your life experience, interests, ambitions and inspirations. Think of it as your interview with the admissions office. Be open. Be reflective. Find your individual voice and express it.

While this section of the application is just one part we consider when making our admission decision, it helps provide context for the rest of your application.

---

### The basics

- You will have 8 questions to choose from. You must respond to any 4 of the 8 questions.
- Each response is limited to a maximum of 350 words.
- Which questions you choose to answer is entirely up to you: But you should select questions that are most relevant to your experience and that best reflect your individual circumstances.
- All questions are equal: All questions are given equal consideration in the application review process, which means there is no advantage or disadvantage to choosing certain questions over others.

---

### Freshman questions & brainstorm exercise

The following exercises are suggestions to help you get started. Remember, you don't have to answer all eight questions – you only need to answer four. So if some questions aren't the right fit for you, that's OK. The important thing is expressing who are you, what matters to you and what you want to share with UC.

---

**1. Describe an example of your leadership experience in which you have positively influenced others, helped resolve disputes, or contributed to group efforts over time.**

How do you define “leader”? List three words that you think describe what a leader is:

- 1.
- 2.
- 3.

Do any of these words apply to you? How? Is there a time in your life when you displayed any of these traits?

---

**2. Every person has a creative side, and it can be expressed in many ways: problem solving, original and innovative thinking, and artistically, to name a few. Describe how you express your creative side.**

Can you think of a time your viewpoint was unique compared to others? What was the issue or problem from your perspective? Now think of the same situation from the perspective of another person who was there with you. How was your approach different from that other person's?

Was there ever a problem where your imagination and intuition guided you to the solution?

Do you have a passion for music, theater, visual art, dance, etc.? What have you gained from it that has affected other parts of your life?

---

**3. What would you say is your greatest talent or skill? How have you developed and demonstrated that talent over time?**

List three of your talents or skills:

- 1.
- 2.
- 3.

Were these talents or skills the same a few years ago? What changed? What improved?

Which one of the three talents or skills you listed is the most meaningful or important to you and why? Does the talent come naturally or have you worked hard to develop this skill or talent?



## PERSONAL INSIGHT QUESTIONS: GUIDE FOR FRESHMAN APPLICANTS

UNIVERSITY  
OF  
CALIFORNIA

### 4. Describe how you have taken advantage of a significant educational opportunity or worked to overcome an educational barrier you have faced.

Feel free to speak about either an opportunity or a barrier. It's OK if you've experienced one and not the other.

#### EDUCATIONAL OPPORTUNITIES:

List any programs or additional classes that have better prepared you for college:

- 1.
- 2.
- 3.

How did you find out about these programs or classes? How did you take what you learned and apply it to your schoolwork or other aspects of your life?

#### EDUCATIONAL BARRIERS:

Have you faced any barriers or challenges related to school and/or your schoolwork? How did you overcome or strive to overcome them? List three personal characteristics or skills you had to call on to overcome this challenge:

- 1.
- 2.
- 3.

### 5. Describe the most significant challenge you have faced and the steps you have taken to overcome this challenge. How has this challenge affected your academic achievement?

Have you had a difficult experience in your life? How did you get through it? What did you learn going through this experience? If you're currently working your way through a challenge, what are you doing now and does that affect different aspects of your life? For example, ask yourself, "How has my life changed at home, at my school, with my friends, or with my family?"

### 6. Think about an academic subject that inspires you. Describe how you have furthered this interest inside and/or outside of the classroom.

Think about all of the classes you've taken at school. Now fill in the blank: I would go to [class name] even if I didn't have to.

It doesn't have to be a class in which you've earned good grades – the important thing is you enjoyed the subject and it impacted you in some way.

(#6 continued)

Maybe there's a course you *haven't* taken at school that you wish you did take or are looking forward to taking in college. How have you pursued your interest in that subject outside of school?

### 7. What have you done to make your school or your community a better place?

Did you contribute to a positive change at your school or in your community? What steps have you taken to accomplish this? Remember, even small changes can have a big impact. Why were you inspired to act? What did you learn from your effort?

### 8. Beyond what has already been shared in your application, what do you believe makes you stand out as a strong candidate for admissions to the University of California?

From your point of view, what do you feel makes you an excellent choice for UC? Don't be afraid to brag a little. Here are a few lists to help you get started.

What do you value in your life? What's important to you? List three of them here:

- 1.
- 2.
- 3.

What are you passionate about?

- 1.
- 2.
- 3.

When you attend UC, what three things are you most looking forward to?

- 1.
- 2.
- 3.

Does anything overlap? Is there anything from the lists that you want to expand on?

### Next steps

As you filled out the worksheet, were there any topics that seemed particularly interesting? You might consider answering those questions as part of your application. But the choice is yours! Take your time in selecting which questions to answer and how to answer them. For more information, visit our website at [ucal.us/personalquestions](https://ucal.us/personalquestions).

# THE COMMON APPLICATION



## **2020-2021 Common Application Essay Prompts**

1. Some students have a background, identity, interest, or talent that is so meaningful they believe their application would be incomplete without it. If this sounds like you, then please share your story.
2. The lessons we take from *obstacles we encounter* can be fundamental to later success. Recount a time when you faced a *challenge, setback, or failure*. How did it affect you, and what did you learn from the experience?
3. Reflect on a time when you *questioned* or challenged a belief or idea. What prompted your *thinking*? What *was the outcome*?
4. Describe a problem you've solved or a problem you'd like to solve. It can be an intellectual challenge, a research query, an ethical dilemma - anything that is of personal importance, no matter the scale. Explain its significance to you and what steps you took or could be taken to identify a solution.
5. Discuss an accomplishment, event, or *realization* that *sparked a period of personal growth and a new understanding of yourself or others*.
6. *Describe a topic, idea, or concept you find so engaging that it makes you lose all track of time. Why does it captivate you? What or who do you turn to when you want to learn more?*
7. *Share an essay on any topic of your choice. It can be one you've already written, one that responds to a different prompt, or one of your own design.*



# College Admissions Testing Information

## For the Class of 2021

### SAT

March 14, 2020  
May 2, 2020  
June 6, 2020  
August 29, 2020  
October 3, 2020  
November 7, 2020  
December 5, 2020

*Register online at  
[www.collegeboard.org/register](http://www.collegeboard.org/register)*

### SAT Subject Tests

May 2, 2020  
June 6, 2020  
August 29, 2020  
October 3, 2020  
November 7, 2020  
(only date for language with listening exams)  
December 5, 2020

*Register online at  
[www.collegeboard.org/register](http://www.collegeboard.org/register)*

### ACT

April 4, 2020  
June 13, 2020  
July 18, 2020  
September 12, 2020  
October 24, 2020  
December 12, 2020

*Register online at [www.act.org](http://www.act.org)*

Practice booklets are available in the College and Career Center.  
Fee waivers are available for eligible students in the College and Career Center.

## **"A Plus Schools for B Students"**

Below is a list of great colleges and universities that have high acceptance rates (above 60%) and strong ratings in the 2020 *US News Best Colleges* rankings. From *US News and World Report* 2020

Adelphi University (NY)	University of Arkansas (AR)
Auburn University (AL)	University of Arizona (AZ)
Belmont University (TN)	University of Cincinnati (OH)
Bethel University (MN)	University of Dayton (OH)
Biola University (CA)	University of Delaware (DE)
Clarkson University (NY)	University of Detroit Mercy (MI)
Colorado State University (CO)	University of Findlay (OH)
Concordia University Wisconsin (WI)	University of Hawaii – Manoa (HI)
Creighton University (NE)	University of Houston (TX)
Duquesne University (PA)	University of Idaho (ID)
Elon University (NC)	University of Illinois – Chicago (IL)
Gannon University (PA)	University of Indianapolis (IN)
George Mason University (VA)	University of Iowa (IA)
George Fox University (OR)	University of Kansas (KS)
Gonzaga University (WA)	University of Louisville (KY)
Grand Valley State University (MI)	University of Massachusetts (MA)
Harding University (AR)	University of Mississippi (MS)
Hofstra University (NY)	University of Missouri (MO)
Iowa State University (IA)	University of New Hampshire (NH)
Kansas State University (KS)	University of Nevada – Reno (NV)
Lipscomb University (TN)	University of North Carolina (NC)
Long Island University (NY)	University of North Dakota (ND)
Louisiana State University – Baton Rouge (LA)	University of North Texas (TX)
Louisiana Tech University (LA)	University of Oregon (OR)
Loyola University of Chicago (IL)	University of Oklahoma (OK)
Marquette University (WI)	University of Rhode Island (RI)
Mercer University (GA)	University of San Francisco (CA)
Michigan State University (MI)	University of St. Joseph (CT)
Misericordia University (PA)	University of The Pacific (CA)
Montana State University (MT)	University of Wyoming (WY)
Ohio University (OH)	Valparaiso University (IN)
Oklahoma City University (OK)	Virginia Commonwealth University (VA)
Oklahoma State University (OK)	West Virginia University (WV)
Oregon State University (OR)	Western New England University (MA)
Quinnipiac University (CT)	Wilkes University (PA)
Rutgers University (NJ)	
Seattle University (WA)	
Seton Hall University (NJ)	
Shenandoah University (VA)	
St. Catherine University (MN)	
St. John Fisher College (NY)	
St. John's University (NY)	
Temple University (PA)	
Tennessee Technological University (TN)	
Texas Tech University (TX)	
University of Alabama – Birmingham (AL)	

## What Is WUE?

WUE is the Western Undergraduate Exchange, a program coordinated by the Western Interstate Commission for Higher Education (WICHE). Through WUE, students in Western states may enroll in participating two-year and four-year public college programs at a reduced tuition level: up to 150 percent of the institution's regular resident tuition. In all cases, WUE tuition is considerably less than nonresident tuition. For answers to many of the commonly asked questions about WUE, visit [wiche.edu/askwiche](http://wiche.edu/askwiche).

## Which States and U.S. Territories Participate?

Resident students from the following states and U.S. Territories may participate, if they meet eligibility requirements:

Alaska	Hawai'i	Oregon
Arizona	Idaho	South Dakota
California	Montana	Utah
Colorado	Nevada	Washington
CNMI*	New Mexico	Wyoming
Guam	North Dakota	

## Eligibility

Many institutions require evidence of academic performance, such as ACT/SAT test scores or high school GPA, or place other conditions on WUE enrollment. Consult the WUE website for details.

## Programs Available

Virtually all undergraduate fields are available to WUE students at one or more of the participating colleges and universities. Some institutions have opened their entire curriculum on a space-available or first-come, first-served basis. Others offer only designated programs at the discounted WUE rate. To learn about the wide array of programs available, consult the WUE Savings Finder at [wuesavingsfinder.wiche.edu](http://wuesavingsfinder.wiche.edu). For additional details, follow the links to the enrolling institutions' websites.

## Application and Admission

Apply directly to the institution(s) of your choice for admission and WUE tuition status. **Mark prominently on the institution's application form that you seek admission as a WUE student.**

## More Information

Information about specific programs offered through WUE can be obtained from the admissions office of participating institutions. Information about student eligibility and the operation of the program in any state may be obtained from the state contact offices listed on page four of this handout.

\* Commonwealth of the Northern Mariana Islands

## ALASKA

### FOUR-YEAR INSTITUTIONS

University of Alaska Anchorage  
University of Alaska Fairbanks  
University of Alaska Southeast

Note: Check with UAA to confirm which branch campuses participate.

## ARIZONA

### TWO-YEAR INSTITUTIONS

Arizona Western College  
Central Arizona College  
Chandler-Gilbert Community College  
Cochise College  
Coconino Community College  
Eastern Arizona College  
Estrella Mountain Community College  
Gateway Community College  
Glendale Community College  
Mesa Community College  
Mohave Community College  
Northland Pioneer College  
Paradise Valley Community College  
Phoenix College  
Pima Community College  
Rio Salado College  
Scottsdale Community College  
South Mountain Community College  
Yavapai College

### FOUR-YEAR INSTITUTIONS

Arizona State University, Downtown Campus  
Arizona State University, Polytechnic Campus  
Arizona State University, West Campus  
Northern Arizona University  
Northern Arizona University Yuma  
University of Arizona  
University of Arizona South

## CALIFORNIA

### FOUR-YEAR INSTITUTIONS

California State Polytechnic University, Pomona  
California State University, Bakersfield  
California State University, Channel Islands  
California State University, Chico  
California State University, Dominguez Hills  
California State University, East Bay  
California State University, Maritime Academy  
California State University, Northridge  
California State University, Sacramento  
California State University, San Bernardino  
California State University, San Marcos  
California State University, Stanislaus  
Humboldt State University  
Sonoma State University  
University of California, Merced

## COLORADO

### TWO-YEAR INSTITUTIONS

Aims Community College  
Arapahoe Community College  
Colorado Mountain College  
Colorado Northwestern Community College  
Community College of Aurora  
Community College of Denver  
Front Range Community College  
Lamar Community College  
Morgan Community College  
Northeastern Junior College  
Otero Junior College  
Pikes Peak Community College  
Pueblo Community College  
Red Rocks Community College  
Trinidad State Junior College

### FOUR-YEAR INSTITUTIONS

Adams State University  
Colorado Mesa University  
Colorado State University  
Colorado State University, Pueblo  
Fort Lewis College  
Metropolitan State University of Denver  
University of Colorado at Colorado Springs  
University of Colorado Denver  
University of Northern Colorado  
Western Colorado University

## COMMONWEALTH OF THE NORTHERN MARIANA ISLANDS

### TWO-YEAR INSTITUTION

Northern Marianas College

## GUAM

### FOUR-YEAR INSTITUTION

University of Guam

## HAWAII

### FOUR-YEAR INSTITUTIONS

University of Hawai'i at Hilo  
University of Hawai'i at Mānoa  
University of Hawai'i Maui College  
University of Hawai'i - West Oahu

## IDAHO

### TWO-YEAR INSTITUTIONS

College of Southern Idaho  
North Idaho College

### FOUR-YEAR INSTITUTIONS

Boise State University  
Idaho State University  
Lewis-Clark State College  
University of Idaho

## MONTANA

### TWO-YEAR INSTITUTIONS

Dawson Community College  
Flathead Valley Community College  
Great Falls College Montana State University  
Helena College University of Montana  
Highlands College of Montana Tech  
Miles Community College

### FOUR-YEAR INSTITUTIONS

Montana State University - Billings  
Montana State University - Bozeman  
Montana State University - Northern  
Montana Tech of the University of Montana  
The University of Montana  
The University of Montana - Western

## NEVADA

### TWO-YEAR INSTITUTIONS

College of Southern Nevada  
Great Basin College  
Truckee Meadows Community College  
Western Nevada College

## FOUR-YEAR INSTITUTIONS

Nevada State College  
University of Nevada, Las Vegas  
University of Nevada, Reno

## NEW MEXICO

### TWO-YEAR INSTITUTIONS

Eastern New Mexico University - Roswell  
New Mexico Junior College  
New Mexico Military Institute  
New Mexico State University - Alamogordo  
Santa Fe Community College

### FOUR-YEAR INSTITUTIONS

Eastern New Mexico University - Portales  
New Mexico Highlands University  
New Mexico Institute of Mining and Technology  
New Mexico State University  
Northern New Mexico College  
The University of New Mexico  
Western New Mexico University

## NORTH DAKOTA

### TWO-YEAR INSTITUTIONS

Bismarck State College  
Dakota College at Bottineau  
Lake Region State College  
North Dakota State College of Science  
Williston State College

### FOUR-YEAR INSTITUTIONS

Dickinson State University  
Mayville State University  
Minot State University  
North Dakota State University  
University of North Dakota  
Valley City State University

## OREGON

### TWO-YEAR INSTITUTIONS

Klamath Community College

### FOUR-YEAR INSTITUTIONS

Eastern Oregon University  
Oregon Institute of Technology  
Portland State University  
Southern Oregon University  
Western Oregon University



## SOUTH DAKOTA

Associate degree programs, available at most South Dakota universities, are open to WUE students, as are baccalaureate programs.

### FOUR-YEAR INSTITUTIONS

Black Hills State University  
Dakota State University  
Northern State University  
South Dakota School of Mines & Technology  
South Dakota State University  
University of South Dakota

## UTAH

### TWO-YEAR INSTITUTIONS

Salt Lake Community College  
Snow College  
Utah State University Eastern

### FOUR-YEAR INSTITUTIONS

Dixie State University  
Southern Utah University  
The University of Utah  
Utah State University  
Utah Valley University  
Weber State University

## WASHINGTON

### TWO-YEAR INSTITUTIONS

Spokane Community College  
Spokane Falls Community College

### FOUR-YEAR INSTITUTIONS

Central Washington University  
Eastern Washington University  
The Evergreen State College  
Washington State University, Everett  
Washington State University, Pullman  
Washington State University, Tri-Cities  
Washington State University, Vancouver  
Western Washington University

## WYOMING

### TWO-YEAR INSTITUTIONS

Casper College  
Central Wyoming College  
Eastern Wyoming College  
Gillette College  
Laramie County Community College  
Northwest College  
Sheridan College  
Western Wyoming Community College

### FOUR-YEAR INSTITUTION

University of Wyoming

# Junior Year Checklist

## ALL YEAR

- ☐ Review your four year high school academic plan
- ☐ Monitor your grades regularly using your myIUSD portal. Use study groups and tutors as needed.
- ☐ Discuss post-secondary and career goals with your parents and counselor.
- ☐ Be intentional in getting to know teachers and counselors who may be writing your letters of rec.
- ☐ Continue co-curricular and extracurricular activities. Keep a log of all activities.
- ☐ Actively seek and apply for private scholarships.
- ☐ Visit college campuses and college fairs.
- ☐ Ask the ROP coordinator about career related courses.
- ☐ Students applying to a U.S. military academy should contact their Congressional Representative
- ☐ Athletes should review the NCAA Guide for Student Athletes and file with the NCAA Clearinghouse

## FALL

- ☐ Take the PSAT. Review your results for strengths and weaknesses in preparation for the SAT.
- ☐ Consider taking the SAT subject exam(s).
- ☐ Attend college rep visits on campus.
- ☐ Attend the Mock Admissions workshop hosted by the College and Career Center.

## SPRING

- ☐ Take the ACT and/or SAT exam.
- ☐ Review ACT and/or SAT results and decide whether or not to try for a better score.
- ☐ Register for appropriate AP tests.
- ☐ Attend the Financial Aid workshop hosted by the College and Career Center.
- ☐ Attend the Career Speaker Series to learn about various industries.
- ☐ Visit with the College and Career Coordinator or your counselor to explore college options.
- ☐ Use Naviance College Match or College Board Search to find colleges that fit what you're looking for.
- ☐ Explore college websites and their requirements for admission.
- ☐ Build a list of schools you're interested in, including reach, target, and backup schools.
- ☐ Plan summer activities. Consider college courses, enrichment courses, ROP courses, volunteering, working, studying for the SAT or ACT, visiting colleges, learning a new skill, or travelling.

# Senior Year Checklist

## ALL YEAR

- ☐ Review class schedule and double-check graduation and admissions requirements.
- ☐ Maintain your grades throughout your senior year.
- ☐ Discuss post-secondary and career goals with your parents and counselor.
- ☐ Continue co-curricular and extracurricular activities. Keep a log of all activities.
- ☐ Ask the ROP Coordinator about career related courses.
- ☐ Actively seek and apply for private and institutional scholarships.

## FALL

- ☐ If you're hoping for a better score, register to take the ACT and/or SAT exam again.
- ☐ Consider taking the SAT subject exam(s).
- ☐ Attend the Mock Admissions workshop hosted by the College and Career Center.
- ☐ Visit with the College and Career Coordinator or your counselor to explore college options.
- ☐ Use Naviance College Match or College Board Search to find colleges that fit what you're looking for.
- ☐ Attend college rep visits on campus.
- ☐ Explore college websites and their requirements for admission.
- ☐ Visit college campuses and college fairs.
- ☐ Narrow your list of colleges to 8-10 schools. Review admission requirements of colleges on your list.
- ☐ Create a calendar and keep track of deadlines for applications and financial aid submissions.
- ☐ Complete college applications, including personal statements and supplemental essays, on time.
- ☐ Request counselor and teacher recommendations.
- ☐ Have your transcript(s) and official test scores sent to colleges as requested.
- ☐ Attend the college application workshops if you need help with your applications.
- ☐ Attend the Financial Aid workshop hosted by the College and Career Center.
- ☐ Athletes should review the NCAA Guide Student Athletes and file with the NCAA Clearinghouse.

## SPRING

- ☐ Complete and submit FAFSA no later than March 2. Don't forget to apply for a FAFSA pin.
- ☐ If you were accepted for Early Decision, withdraw your application from remaining colleges.
- ☐ Complete mid-year reports and/or send 7<sup>th</sup> semester transcripts, as requested.
- ☐ Attend the Community College workshop hosted by the College and Career Center.
- ☐ Apply to community colleges. Take advantage of priority registration by applying early.
- ☐ Register for placement exams (english, math, etc.) if the college you're attending requires them.
- ☐ Register for appropriate AP tests.
- ☐ Visit schools you've been accepted to in order to decide which will be the best fit.
- ☐ Review Financial Aid packages received (usually between April 1 and May 1) and compare.
- ☐ Notify the college you choose to attend by May 1. Notify other colleges you will not be attending.
- ☐ Complete the senior survey.
- ☐ Request final transcript be sent to the college or university you will attend.
- ☐ Plan to relax this summer! If you want to stay busy, getting some work experience is a great option.



# COASTLINE

## REGIONAL OCCUPATIONAL PROGRAM



Mr. Asrar  
ROP Specialist

**Educate, Innovate,  
Inspire**

### What is ROP?

We are a state-funded public education group that provides career technical education to meet identified education standards and industry needs of our communities. We serve five school districts in Orange County and accredited by the Western Association of Schools and Colleges (WASC). Classes blend soft skills with hands-on experiences and are taught by experienced credentialed teachers. Not to mention, classes are free to all Uni students. Check out CoastlineROP.net

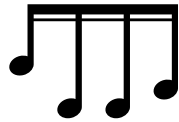
### Contact Info

I am located in the College and Career Center  
M-F 8:30am-1:30pm

E-mail: [hasanasrar@iusd.org](mailto:hasanasrar@iusd.org) & (949) 936-7633



**Computer  
Graphics**  
UC/CSU  
Approved



**Music  
Technology**  
UC/CSU  
Approved



**Visual  
Imagery**  
UC/CSU  
Approved



**Virtual  
Enterprise**  
UC/CSU  
Approved



**Automotive  
Motor &  
Light Repair**  
UC/CSU  
Approved

### ^In-Bell ROP Classes at University H.S.^



**Animal  
Health  
Care**



**Baking  
and  
Pastries**



**Crime Scene  
Investigation**



**Emergency  
Medical  
Responder**



**Medical  
Careers &  
Health  
Systems**

### ^After-Bell ROP Classes Offered^

- All classes give credit towards high school graduation and most classes satisfy one year of visual and performing arts ("F" requirement) & one year of a college-preparatory elective ("G" requirement) for UC/CSU applications. We also offer industry certifications that students can begin earning in ROP classes!
- Not sure on a career goal? ROP is a great opportunity to step outside your comfort zone and gear your interests. We offer free transportation to and from class if necessary! We also accommodate students with disabilities and make sure there is no obstacle between a student and taking an ROP.
- Planning on heading to a Community College? We have articulation agreements with IVC, OCC, SBC, CCC & GWC. Not sure what that means? Get ahead and go talk to Mr. Asrar.
- 2020 Orange County Workforce Indicators: When it comes to college readiness students are going to a California Community College **42.8%** of the time after high school. **11.8%** are going straight to a California State University and **9%** attend out of state schools. **8.4%** of students are attending Universities in California and **4.1%** attend private 2-year and 4-year colleges. Taking an ROP class can add value for any student, regardless of their academic / career path!

## AGRICULTURE AND NATURAL RESOURCES

Credit	Class	Location	Day	Time	Note
5	Animal Health Care	Presidio Square	T,Th	4pm-7pm	See C.S for details
10	Animal Health Care Internship	Presidio Square	M,T,W,Th	4pm-7pm	

## ARTS, MEDIA, AND ENTERTAINMENT

5	Art of TV & Video Production	Portola	M	4:15pm-9pm	
5	Computer Graphics	University	M,T,W,Th,F	1 <sup>st</sup> ,2 <sup>nd</sup> ,3 <sup>rd</sup>	In-bell
5	Music Technology	University	M,T,Th,F	2 <sup>nd</sup>	In-bell
5	Visual Imagery	University	M,T,W,F	1 <sup>st</sup>	In-bell

## BUILDING TRADES AND CONSTRUCTION

5	BITA 1	Creekside	T,Th	4pm-6:30pm	
5	Construction Technology	Marina	T,Th	3pm-5:30pm	

## BUSINESS AND FINANCE

Will update when courses become available...

## EDUCATION, CHILD DEVELOPMENT AND FAMILY SERVICES

5	Careers in Education	Trabuco Hills	T,Th	2:15pm-4:45pm	
5	Careers with Children Internship	Westminster	M,W	3pm-6pm	

## ENGINEERING AND ARCHITECTURE

Will update when courses become available...

## HEALTH SCIENCE AND MEDICAL TECHNOLOGY

10	CNA (Pre-Certification) Internship	Laguna Hills, Ocean View			See C.S for details
5	Dental Assistant Back Office	Presidio Square	M,W or T,Th	2:30pm-5:30pm	
5	Dental Assistant Front Office	Presidio Square	M,W	5:45pm-8:45pm	
5	Medical Careers & Health Systems	Presidio, Creekside	M,W		See C.S for details
5	Medical Nursing Careers Internship	Presidio Square			See C.S for details
5	Sports Medicine & Athletic Training	Trabuco Hills	T,Th	2:15pm-4:45pm	

## HOSPITALITY, TOURISM, AND RECREATION

5	Baking & Pastry Fundamentals	Creekside, Laguna Hills, Valley Vista			See C.S for details
5	Culinary Arts	Creekside, Ocean View			See C.S for details
5	Culinary Arts Internship	Tustin	T,Th	3:30pm-8:30pm	
10	Food Services Cooperative	Tustin	W	3pm-5:30pm	

## INFORMATION AND COMMUNICATIONS TECHNOLOGIES

Will update when courses become available...

## MANUFACTURING AND PRODUCT DEVELOPMENT

Will update when courses become available...

## MARKETING, SALES AND SERVICE

5	Retail Sales & Merchandising Internship	Westminster Mall	M,W	3:30pm-6:30pm	
5	Virtual Enterprise	University	M,T,W,F	1 <sup>st</sup>	In-bell

## PUBLIC SERVICES

5	Administration of Justice	Laguna Hills			
5	Crime Scene Investigation	Creekside/M.V./Westminster			See C.S for details
5	Emergency Medical Responder				See C.S for details
5	Emergency Medical Technician				See C.S for details
5	Fire Science 101	Presidio Square	M or T		See C.S for details

## TRANSPORTATION

5	Automotive Technology Internship	University	M,W	3pm-6pm	
5	Automotive Technology Pre-Apprenticeship	Laguna Hills	T,Th	3pm-6pm	
5	Automotive Technology Motor & Light Repair 1	University	M,T,W,F	5 <sup>th</sup>	In-bell

C.S=Career Specialist

# Class of 2019- Acceptances by 4 Year Colleges and Universities (Public Copy)

School	State	#	AVG. GPA	AVG. SAT	AVG. ACT	GPA Range	SAT Range	ACT Range
U of Alabama	AL	2	3.07	-	22	-	-	-
U of Alabama in Huntsville	AL	1	-	-	-	-	-	-
Allegheny College	PA	1	-	-	-	-	-	-
American Academy of Dramatic Arts	NY	1	-	-	-	-	-	-
American Career College	CA	1	-	-	-	-	-	-
American College	PA	1	-	-	-	-	-	-
American University	DC	3	3.77	1430	31	4.24 - 3.49	-	35 - 29
The American University of Paris	France	2	3.41	-	33	-	-	-
Arizona State University	AZ	23	3.49	1350	27	4.35 - 2.13	1550 - 1010	32 - 18
U of Arizona	AZ	21	3.75	1400	30	4.44 - 3.05	1560 - 1150	35 - 24
The Art Center Design College	AZ	1	-	-	-	-	-	-
Azuza Pacific University	CA	1	-	-	-	-	-	-
Baylor University	TX	7	3.96	1420	32	4.35 - 3.73	1510 - 1300	36 - 27
Belmont University	TN	1	-	-	-	-	-	-
Berklee College of Music	MA	2	3.73	-	-	-	-	-
Biola University	CA	3	3.38	-	24	3.51 - 3.21	-	27 - 22
Boston College	MA	5	4.21	1490	34	4.44 - 3.66	1520 - 1450	35 - 34
Boston University	MA	20	4.14	1480	33	4.49 - 3.71	1570 - 1270	35 - 28
Brandeis University	MA	1	-	-	-	-	-	-
U of British Columbia	Canada	1	-	-	-	-	-	-
Brown University	RI	2	4.52	1530	36	-	-	-
Bryant University	RI	1	-	-	-	-	-	-
U at Buffalo The State University of New York	NY	1	-	-	-	-	-	-
California College of the Arts (San Francisco)	CA	1	-	-	-	-	-	-
California Institute of Technology	CA	1	-	-	-	-	-	-
California Lutheran University	CA	1	-	-	-	-	-	-
California Northstate University College of Health Sciences	CA	1	-	-	-	-	-	-
California State University, Channel Islands	CA	1	-	-	-	-	-	-
California State University, Chico	CA	9	3.27	1260	25	3.73 - 2.83	1530 - 1140	-
California State University, Dominguez Hills	CA	4	3.24	1290	22	3.64 - 2.86	-	23 - 20
California State University, Fullerton	CA	62	3.65	1350	28	4.44 - 2.89	1540 - 1070	35 - 23
Humboldt State University	CA	3	3.57	1370	-	4.00 - 3.33	1520 - 1190	-
California State University, Long Beach	CA	43	3.88	1420	29	4.46 - 2.97	1550 - 1190	35 - 21
California State University, Los Angeles	CA	2	3.65	1270	-	-	-	-
California State University, Monterey Bay	CA	5	3.62	1330	28	4.03 - 3.14	1520 - 1160	31 - 26
California State University, Northridge	CA	6	3.49	1480	29	4.46 - 2.97	1530 - 1430	34 - 23
California State Polytechnic University, Pomona	CA	40	3.80	1380	30	4.58 - 3.08	1580 - 1140	35 - 22
California State University, Sacramento	CA	3	3.23	1350	-	4.00 - 2.97	1530 - 990	-
California State University, San Bernardino	CA	2	3.45	1480	-	-	-	-
San Diego State University	CA	26	4.03	1420	31	4.46 - 3.44	1520 - 1120	34 - 26
San Francisco State University	CA	16	3.44	1300	28	4.03 - 2.87	1420 - 1140	33 - 24
San Jose State University	CA	13	3.59	1380	29	4.29 - 2.97	1560 - 1140	33 - 26
California Polytechnic State University, San Luis Obispo	CA	21	4.13	1500	33	4.58 - 3.35	1600 - 1350	35 - 27
California State University, San Marcos	CA	3	3.47	1200	24	3.68 - 3.23	-	-
Sonoma State University	CA	2	3.59	1210	-	-	-	-
UC Berkeley	CA	45	4.36	1520	34	4.56 - 3.92	1590 - 1330	36 - 28
UC Davis	CA	69	4.23	1500	33	4.56 - 3.92	1590 - 1300	36 - 29
UC Irvine	CA	82	4.20	1500	33	4.63 - 3.34	1590 - 1230	36 - 26
UC Los Angeles	CA	34	4.42	1550	35	4.63 - 3.43	1590 - 1500	36 - 30
UC Merced	CA	18	3.70	1330	28	4.29 - 3.24	1510 - 1060	34 - 22
UC Riverside	CA	94	3.86	1430	31	4.63 - 3.18	1590 - 1180	36 - 23
UC San Diego	CA	72	4.34	1530	35	4.63 - 3.80	1600 - 1380	36 - 30
UC Santa Barbara	CA	70	4.30	1520	34	4.63 - 3.80	1600 - 1330	36 - 30
UC Santa Cruz	CA	50	4.05	1470	32	4.46 - 3.49	1550 - 1320	35 - 25
Calvin College	MI	1	-	-	-	-	-	-
Carnegie Mellon University	PA	7	4.32	1540	35	4.55 - 4.05	1580 - 1500	36 - 34
Case Western Reserve University	OH	3	3.88	-	34	-	-	-
Champlain College	VT	1	-	-	-	-	-	-
Chapman University	CA	11	3.82	1360	30	4.28 - 3.57	1490 - 1290	34 - 25
U of Chicago	IL	2	4.36	1540	-	-	-	-
The Chinese University of Hong Kong	China	1	-	-	-	-	-	-
U of Cincinnati	OH	1	-	-	-	-	-	-
Cleveland College of Art and Design	England	1	-	-	-	-	-	-

# Class of 2019- Acceptances by 4 Year Colleges and Universities (Public Copy)

School	State	#	AVG. GPA	AVG. SAT	AVG. ACT	GPA Range	SAT Range	ACT Range
Colby College	ME	2	3.90	-	32	-	-	-
U of Colorado at Boulder	CO	25	3.83	1390	30	4.36 - 3.25	1560 - 1140	35 - 23
Colorado College	CO	1	-	-	-	-	-	-
Colorado School of Mines	CO	1	-	-	-	-	-	-
Colorado State University	CO	3	3.68	-	-	4.03 - 3.23	-	-
Columbia University	NY	2	4.52	-	-	-	-	-
Concordia University - Irvine	CA	1	-	-	-	-	-	-
Concordia University - Montreal	Canada	1	-	-	-	-	-	-
U of Connecticut	CT	2	3.54	-	31	-	-	-
Cornell University	NY	4	4.43	1550	35	4.50 - 4.33	1590 - 1510	35 - 34
U of Delaware	DE	2	3.91	1440	-	-	-	-
U of Denver	CO	5	3.78	1320	26	4.00 - 3.32	1520 - 1140	29 - 23
DePaul University	IL	3	3.53	1370	27	3.60 - 3.42	-	-
Dominican University of California	CA	2	3.17	-	-	-	-	-
Drew University	NJ	1	-	-	-	-	-	-
Drexel University	PA	6	3.91	1480	31	4.29 - 3.35	1560 - 1350	35 - 27
Duke Kunshan University	China	1	-	-	-	-	-	-
Duke University	NC	1	-	-	-	-	-	-
Durham University	England	1	-	-	-	-	-	-
Earlham College	IN	1	-	-	-	-	-	-
U of Edinburgh	Scotland	1	-	-	-	-	-	-
Embry-Riddle Aeronautical University - Daytona Beach	CA	1	-	-	-	-	-	-
Emerson College	MA	4	3.74	1390	30	3.86 - 3.69	-	33 - 27
Emory University	GA	4	4.35	-	-	4.44 - 4.11	-	-
U of Exeter	England	1	-	-	-	-	-	-
Fashion Institute of Design & Merchandising, Irvine	CA	2	2.44	-	-	-	-	-
Fashion Institute of Design and Merchandising, Los Angeles	CA	1	-	-	-	-	-	-
Florida Polytechnic University	FL	1	-	-	-	-	-	-
Florida State University College of Motion Picture Arts	FL	1	-	-	-	-	-	-
Fordham University	NY	4	3.93	1420	31	4.06 - 3.74	-	33 - 30
Gallaudet University	DC	1	-	-	-	-	-	-
The George Washington University	DC	4	4.13	1520	34	4.26 - 4.00	-	35 - 33
Georgetown University	DC	2	4.21	-	-	-	-	-
Georgia Institute of Technology	GA	3	4.43	1490	-	4.53 - 4.24	1540 - 1430	-
Goucher College	MD	1	-	-	-	-	-	-
Grand Canyon University	AZ	1	-	-	-	-	-	-
Hampden-Sydney College	VA	1	-	-	-	-	-	-
Harvard College	MA	2	4.38	1540	-	-	-	-
U of Hawaii at Manoa	HI	5	3.62	1330	27	4.16 - 3.33	1490 - 1100	35 - 22
Hofstra University	NY	5	3.81	1370	30	4.14 - 3.25	1520 - 1210	34 - 25
Holy Names University	CA	1	-	-	-	-	-	-
U of Houston	TX	1	-	-	-	-	-	-
Howard University	DC	1	-	-	-	-	-	-
U of Illinois at Urbana-Champaign	IL	18	4.21	1520	34	4.58 - 3.80	1580 - 1380	35 - 32
Indiana University at Bloomington	IN	6	3.79	1303	30	4.30 - 3.32	1470 - 1140	34 - 23
Iowa State University	IA	1	-	-	-	-	-	-
U of Iowa	IA	1	-	-	-	-	-	-
Ithaca College	NY	1	-	-	-	-	-	-
John Hopkins University	MD	4	4.53	1550	36	4.56 - 4.50	1590 - 1500	-
Juniata College	PA	2	3.81	-	31	-	-	-
Kalamazoo College	MI	1	-	-	-	-	-	-
Keio University	Japan	1	-	-	-	-	-	-
Kent State University	OH	1	-	-	-	-	-	-
U of Kentucky	KY	1	-	-	-	-	-	-
King's College London	England	1	-	-	-	-	-	-
Knox College	IL	1	-	-	-	-	-	-
Laguna College of Art and Design	CA	3	3.27	1110	-	3.50 - 3.07	-	-
U of Leeds	England	1	-	-	-	-	-	-
Lehigh University	PA	2	3.90	1420	-	-	-	-
Lewis & Clark College	OR	3	3.76	-	32	3.81 - 3.68	-	-
Loyola Marymount University	CA	10	3.82	1390	31	4.14 - 3.41	1520 - 1140	35 - 28
Loyola University New Orleans	LA	1	-	-	-	-	-	-
University of Manchester Institute of Science & Technology	England	1	-	-	-	-	-	-

# Class of 2019- Acceptances by 4 Year Colleges and Universities (Public Copy)

School	State	#	AVG. GPA	AVG. SAT	AVG. ACT	GPA Range	SAT Range	ACT Range
Marlboro College	VT	1	-	-	-	-	-	-
Maryland Institute College of Art	MD	2	3.86	1450	-	-	-	-
U of Maryland, College Park	MD	1	-	-	-	-	-	-
Massachusetts Institute of Technology	MA	4	4.51	1560	-	4.55 - 4.49	1590 - 1520	-
U of Massachusetts, Amherst	MA	8	3.83	1430	30	4.11 - 3.35	1520 - 1350	34 - 27
U of Massachusetts, Boston	MA	1	-	-	-	-	-	-
Miami University, Oxford	OH	2	3.36	-	-	-	-	-
Michigan State University	MI	2	3.52	-	26	-	-	-
U of Michigan	MI	7	4.45	1550	35	4.55 - 4.35	1580 - 1500	35 - 34
U of Minnesota, Twin Cities	MN	8	3.94	1400	30	4.47 - 3.54	1520 - 1270	35 - 25
Mississippi State University	MS	1	-	-	-	-	-	-
U of Mississippi	MI	3	3.46	1340	26	4.24 - 2.41	-	35 - 16
Missoula College at University of Montana	MT	1	-	-	-	-	-	-
U of Missouri Columbia	MO	4	3.91	1450	30	4.24 - 3.37	-	35 - 24
U of Missouri Kansas City	MO	1	-	-	-	-	-	-
Montana State University, Bozeman	MT	4	2.97	1250	26	4.31 - 2.41	1520 - 1130	-
Moore College of Art and Design	PA	1	-	-	-	-	-	-
Mount Holyoke College	MA	2	3.94	-	-	-	-	-
The New School - All Divisions	NY	4	3.82	1420	-	4.12 - 3.66	1480 - 1360	-
New York Institute of Technology	NY	1	-	-	-	-	-	-
New York University	NY	32	4.06	1480	33	4.55 - 3.44	1590 - 1270	36 - 27
U of North Carolina at Chapel Hill	NC	1	-	-	-	-	-	-
U of North Dakota	ND	1	-	-	-	-	-	-
U of North Texas	TX	1	-	-	-	-	-	-
Northeastern University	MA	9	4.23	1470	32	4.53 - 3.92	1570 - 1370	25 - 27
Northern Arizona University	AZ	2	3.55	-	29	-	-	-
Northwest Missouri State University	MO	1	-	-	-	-	-	-
Northwestern University	IL	1	-	-	-	-	-	-
U of Notre Dame	IN	1	-	-	-	-	-	-
Occidental College	CA	4	3.95	-	33	4.21 - 3.78	-	36 - 30
The Ohio State University	OH	7	3.83	1410	29	4.31 - 3.37	1470 - 1330	32 - 24
Oklahoma State University	OK	1	-	-	-	-	-	-
U of Oklahoma	OK	1	-	-	-	-	-	-
Oregon State University	OR	6	3.75	1250	29	4.02 - 3.41	1500 - 1100	33 - 22
U of Oregon	OR	21	3.64	1340	27	4.36 - 3.05	1560 - 1030	33 - 22
U of Oregon - Clark Honors College	OR	1	-	-	-	-	-	-
Otis College of Art and Design	CA	3	3.20	1370	-	3.80 - 2.16	1430 - 1320	-
U of the Pacific	CA	9	3.78	1420	29	4.63 - 3.16	1550 - 1200	35 - 22
Pennsylvania State University	PA	15	3.79	1440	31	4.39 - 2.58	1560 - 1300	35 - 24
Pennsylvania State University, Abington	PA	1	-	-	-	-	-	-
U of Pennsylvania	PA	3	4.35	1490	-	4.53 - 4.11	-	-
Pepperdine University	CA	4	4.00	1380	31	4.09 - 3.89	1420 - 1270	34 - 29
U of Pittsburgh	PA	8	3.81	1450	30	4.28 - 3.25	1560 - 1320	35 - 23
Pitzer College	CA	1	-	-	-	-	-	-
Point Loma Nazarene University	CA	2	4.04	1370	29	-	-	-
Pomona College	CA	1	-	-	-	-	-	-
Portland State University	OR	1	-	-	-	-	-	-
U of Portland	OR	1	-	-	-	-	-	-
Pratt Institute	NY	2	3.33	1340	-	-	-	-
Princeton University	NJ	4	4.43	1570	-	4.56 - 4.34	-	-
Principia College	IL	1	-	-	-	-	-	-
U of Puget Sound	WA	3	3.92	-	32	4.00 - 3.81	-	-
Purdue University	IN	16	4.11	1500	33	4.53 - 3.61	1570 - 1270	35 - 32
U of Redlands	CA	3	3.58	1380	-	3.66 - 3.42	-	-
Reed College	OR	1	-	-	-	-	-	-
Regis University	CO	1	-	-	-	-	-	-
Rensselaer Polytechnic Institute	NY	6	4.10	1470	35	4.50 - 3.43	1570 - 1410	35 - 34
Rhode Island School of Design	RI	3	4.04	1460	-	4.34 - 3.66	-	-
U of Rhode Island	RI	1	-	-	-	-	-	-
Rhodes College	TN	1	-	-	-	-	-	-
Rice University	TX	3	4.41	1560	-	4.50 - 4.33	-	-
Ringling College of Art and Design	FL	3	3.31	1230	-	4.16 - 2.53	1490 - 1020	-
Rochester Institute of Technology	NY	1	-	-	-	-	-	-

Class of 2019- Acceptances by 4 Year Colleges and Universities (Public Copy)

School	State	#	AVG. GPA	AVG. SAT	AVG. ACT	GPA Range	SAT Range	ACT Range
U of Rochester	NY	5	4.16	1460	33	4.44 - 3.89	1560 - 1270	35 - 30
Rose-Hulman Institute of Technology	IN	2	3.95	1500	-	-	-	-
Rutgers University-New Brunswick	NJ	3	3.79	1400	30	3.95 - 3.58	-	34 - 28
Saint Mary's College of California	CA	1	-	-	-	-	-	-
U of San Diego	CA	6	4.00	1390	29	4.18 - 3.66	1450 - 1320	31 - 28
U of San Francisco	CA	13	3.81	1380	30	4.26 - 3.45	1560 - 1210	35 - 25
Santa Clara University	CA	7	4.05	1430	30	4.28 - 3.74	1520 - 1390	35 - 26
Savannah College of Art and Design	GA	1	-	-	-	-	-	-
School of the Art Institute of Chicago	IL	1	-	-	-	-	-	-
School of Visual Arts	NY	1	-	-	-	-	-	-
Seattle University	WA	1	-	-	-	-	-	-
Seton Hall University	NJ	1	-	-	-	-	-	-
Smith College	MA	1	-	-	-	-	-	-
Soka University of America	CA	1	-	-	-	-	-	-
Sophia University	Japan	1	-	-	-	-	-	-
U of South Alabama	AL	1	-	-	-	-	-	-
Southern California Institute of Architecture	CA	1	-	-	-	-	-	-
U of Southern California	CA	17	4.37	1540	34	4.55 - 4.00	1590 - 1460	36 - 31
Southern Methodist University	TX	2	4.09	-	33	-	-	-
U of St. Andrews	Scotland	2	4.04	1420	-	-	-	-
St. Olaf College	MN	1	-	-	-	-	-	-
Stanford University	CA	2	4.52	-	-	-	-	-
Stony Brook University	NY	1	-	-	-	-	-	-
Syracuse University	NY	3	3.82	1320	30	4.03 - 3.69	-	35 - 25
Texas A&M University	TX	1	-	-	-	-	-	-
Texas Christian University	TX	2	4.08	1390	-	-	-	-
Texas Tech University	TX	2	3.70	-	32	-	-	-
U of Texas, Austin	TX	7	4.18	1450	34	4.37 - 3.91	1530 - 1330	36 - 32
U of Texas, Dallas	TX	1	-	-	-	-	-	-
U of Toronto	Canada	2	-	-	-	-	-	-
Tufts University	MA	2	4.45	-	-	-	-	-
Tulane University	LA	3	3.61	1480	31	4.00 - 3.08	-	-
Universal Technical Institute	AZ	1	-	-	-	-	-	-
Universidad Francisco de Vitoria	Spain	1	-	-	-	-	-	-
U of Utah	UT	4	3.60	1430	27	3.98 - 3.37	-	-
Vanderbilt University	TN	5	4.40	1490	35	4.53 - 4.28	-	-
Vanguard College	Canada	1	-	-	-	-	-	-
Vassar College	NY	1	-	-	-	-	-	-
Virginia Tech	VA	1	-	-	-	-	-	-
U of Virginia	VA	1	-	-	-	-	-	-
Washington State University	WA	1	-	-	-	-	-	-
Washington University in St. Louis	MO	1	-	-	-	-	-	-
U of Washington	WA	33	4.20	1500	33	4.58 - 3.79	1580 - 1330	36 - 30
U of Washington, Bothell	WA	1	-	-	-	-	-	-
Wellesley College	MA	1	-	-	-	-	-	-
Wesleyan University	CT	1	-	-	-	-	-	-
West Virginia University	WV	1	-	-	-	-	-	-
Western Kentucky University	KY	1	-	-	-	-	-	-
Western Michigan University	MI	2	3.38	-	28	-	-	-
Westmont College	CA	2	3.65	-	28	-	-	-
Whitman College	WA	3	3.92	1430	28	4.00 - 3.82	-	-
Whittier College	CA	1	-	-	-	-	-	-
Willamette University	OR	3	3.81	-	32	3.94 - 3.69	-	-
Williams College	MA	1	-	-	-	-	-	-
U of Wisconsin, Madison	WI	13	4.03	1460	31	4.47 - 3.76	1520 - 1330	35 - 28
The College of Wooster	OH	1	-	-	-	-	-	-
Yale University	CT	3	4.55	1580	35	4.68 - 4.47	-	-